



## Province de Luxembourg I Famenne

Luxembourg, 6900 Belgium

Price: Upon request | Beds: 20 | Baths: 22 | Square feet: 32,291 | Acres: 135,908 |

[Brussels Sotheby's International Realty](#)

This superb 18th-century château stands in the middle of a magnificent park with several ponds in Marche en Famenne in the Belgian Ardennes. The château is presently used as a hotel, and guests enjoy the airy, spacious building as well as its 136 acres of grounds.

The building includes several sitting rooms, dining rooms, a conservatory, an industrial kitchen and 22 bedrooms, each with an en suite bathroom. The oldest room conveys the property's history and is still lined with the original wallpaper from 1687. There are also several meeting rooms. In the basement, there is a fully air-conditioned wine cellar that delights great wine lovers and novices alike.

Amenities include an alarm system, air-conditioning, greenhouse, snooker table and a hunting cabin. A completely separate two-bedroom apartment and a chapel converted into a home complete this property.



This historic chateau awaits a new owner for the next chapter of its long life.



The foundations of this striking château in Luxembourg stretch back to 1687.



This 18th-century chateau is sure to transport you back to the days of French kings and queens.

The castle, with its reception hall, paddocks, caretaker's housing, guest rooms and garage, covers a total of almost 13,000 square feet. Stroll around the exquisite French-style garden or the orchard, or venture farther afield: There are 840 acres of forests and woodlands, 247 acres of meadows and two lakes. The vegetable garden, orchard, farmyard and beehives are suited for organic food preparation. Additional amenities include a pool, cellar and kennels. The domain is well-known for wildlife and game, and its meadows, woods and lakes are fed by small streams.

TAKE A TOUR INSIDE

## Loire Valley Castle Domain



### Castle On a Cliff

Plettenberg Bay, West Cape, 6600 South Africa

Price: \$5,690,354 | Beds: 5 | Baths: 5 | Square feet: 6,458 | Acres: 165.56 |

[Lew Geffen Sotheby's International Realty](#)

This lifestyle property in Plettenberg Bay is a refuge from the hustle and bustle of modern life and overlooks the rugged southern coastline, with dramatic cliffs and panoramic views. Local stone was used in the construction, and the building is designed to look like a castle.

The living areas flow together and are warm and welcoming, featuring wood-burning fireplaces. The home has four double suites, with a fifth double bedroom and bathroom set apart from the house for guests. A stone stairwell leads to a private lower-level study. The kitchen is designed

for handling catering and has ample storage. Staff quarters and a manager's cottage are also on the site.



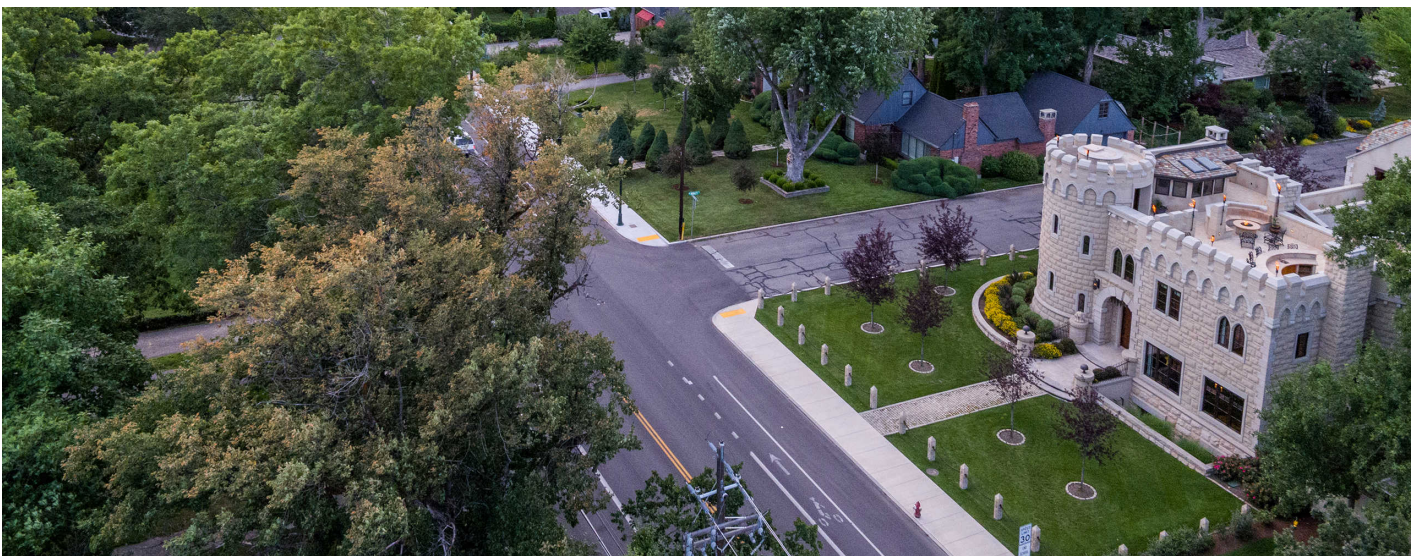
Dramatically situated at the top of a sea cliff, this South African estate is the stuff of fairy tales.

Photo Credit: Glen Murray

Well-positioned patios take advantage of the spectacular views, and depending on the prevailing winds, you can enjoy outdoor living almost all year round. The northern side has a swimming pool, and manicured gardens surround the building. Go exploring on a winding natural path that leads from the castle to a cave dating back to prehistoric times. This expansive natural wonder is included in the sale of the home, and it houses artifacts dating back thousands of years. This is a once-in-a-lifetime opportunity to live in one of South Africa's most beautiful places.

TAKE A TOUR INSIDE

## Castle On a Cliff



## Fairy Tale Residence

1700 E Warm Springs, Boise, Idaho, 83712 United States

Price: \$3,150,000 | Beds: 5 | Baths: 6.5 | Square feet: 5,845 | Acres: 0.37 |

[Group One Sotheby's International Realty](#)

This castle embraces the outdoor lifestyle that's a Boise trademark, with quick access to the Boise River, the lush Greenbelt park, golf and Lucky Peak State Park. It's also close to downtown Boise, which is full of popular

restaurants and art walks. Nearby are collegiate sporting events, concerts at the Idaho Botanical Gardens and outdoor productions.



A truly stunning and unique property conveniently located close to both urban and outdoor attractions.

Photo Credit: David Fish, Blu Fish Photography

The greater area of Boise is at your fingertips, but sometimes you'll be happy to retreat to where home is your castle, complete with iron-gated entrances, Idaho sandstone walls and towers. Let your hair down as you gaze past turrets overlooking the courtyard and to the foothills beyond. Entertain on the rooftop terrace by torchlight, delighting guests with the fire pit, hot tub and bar area.

The main floor of the castle boasts a grand hall, formal dining room, eat-in kitchen and butler's pantry with separate service entrance. Two guest suites, a wine cellar and a circular theater room comprise the lower level, while the master suite commands the entire third floor. With a private sitting room, steam shower and plunge tub in the bath, as well as a